



Art Gallery  
of Western Australia **Preview**

winter 08



New journeys Your collection

## Foreword

Winter at the Art Gallery is never dull and never more so than this year with *PEEP: Glimpses of the last 4 decades from the Kerry Stokes Collection* and *Grace Crowley: being modern* providing enormous visual pleasure and provocative insights into Australian and International 20th and 21st century art.

The recently opened 2008 highlight event *Wonderlust* is already transforming the experience of the Gallery and the State Art Collection for every visitor. *Wonderlust* introduces 500 works by 270 artists from your Collection, new self-guided tours, a *wonderland* children's activity area, access to Collection highlights on the Gallery's website and much more. Organised around five themes *Home, Presence, Mapping, Story* and *Material Gesture*, the new displays of historical and contemporary art, craft and design promise to be stimulating, they will make you think a little differently about the world.

The Acquisition Fund Capital Campaign was launched by the Premier in June. The challenge is to match the \$10 million provided to the Art Gallery of Western Australia Foundation from the State Government. Community leaders from the corporate sector have responded with visionary leadership. To date, the Acquisition Fund's Capital Campaign has received four pledges of \$1 million each from BHP Billiton, National Australia Bank, Wesfarmers and Woodside. We are on our way to achieving our goal of an endowment fund of \$25million, so the income this generates can support purchases in perpetuity. The Acquisition Fund will enable the Gallery to purchase the art of our time, as this generation's gift to future Western Australians. I encourage you to join with us in making our goal a reality through your generosity and support.

In the coming months the Gallery offers visitors a host of activities for every age group, so watch for family days, talks and tours and of course *Art in Bloom* the biennial favourite that announces the return of spring. This Friends' event will again see the Gallery ablaze with innovative floral interpretations of many of the most outstanding works in Your Collection.

Gary Dufour, Acting Director

## Wonderlust

New journeys Your collection

Opens 28 June 2008



**Wonderlust is a dynamic new presentation of the State Art Collection, featuring Indigenous, Australian and International art, craft and design acquired since the Gallery's inception in 1895.**

### Home

*Home* brings together images and objects that awaken ideas and feelings about our sense of place. The notion of home involves memory, history and human relationships as often embodied in material objects. This theme presents a variety of works of art which encourage us to think about how we relate to physical locations and how objects contribute to our sense of identity. Evoking delight in material creativity, *Home* presents familiar objects and landscapes in new and playful ways.

This theme extends to the Police Court, which remains from the Centenary Gallery's previous incarnation. In response to the building's history, works in the court room engage with issues around power and criminality.



**Kathleen O'Connor**

*Flowers and oriental carpet (Algeria)* c1928

mixed media on cardboard

75.5 x 88.2 cm

State Art Collection, Art Gallery of Western Australia  
Gift of Lady Lee-Steere, 1949

## Material Gesture

*Material Gesture* explores the fundamental roles of line and light in the physical creation of art. The material presence, whether of painting, sculpture or drawing, is the key component or essence of the work.

Light, actual or representational, is often central to a work of art's content. It can create perceptual effects or convey symbolic meanings, such as purity and harmony, or evoke natural forms, ceremonial markings and emblems.

Line is also an essential component of art and can be used as a conceptual and/or formal tool. Line can record the artist's hand gestures and mark-making, or construct a systematic ordering of space and perception.



### Barbara Hepworth

*Curved Form (Wave II)* 1959

bronze sculpture with strings

24.5 x 43.0 x 39.5 cm

© Bowness, Hepworth Estate

State Art Collection, Art Gallery of Western Australia

Purchased 1963

right

### Robert Macpherson

*Mayfair: Thirty five paintings, thirty five signs*

*in memory of G.W. and Reno Castelli* 1993–1994

synthetic polymer paint on hardboard and plywood

35 units, 61 x 91.5 cm (each) (overall dimension variable)

State Art Collection, Art Gallery of Western Australia

Purchased with funds from the Sir Claude Hotchin

Art Foundation, 1995

© Robert MacPherson 1993–1994

## Mapping

*Mapping* explores the physical, emotional, geographical and intellectual influences that shape how we understand and move through the places we live in.

*Mapping* includes large-format, horizontal pieces that capture a sense of wonder in response to natural phenomena. These are contrasted with intimate jewellery items that mark the many ways objects map, flatter and frame our bodies. Positioned between these extremes of scale are works of art charting the mythologies and modes of transport which define our experience of the world.



## Presence

*Presence* is about relationships between people and place, cultural and emotional ties to the land, and stories of struggle and triumph. *Presence* reflects Indigenous Australia's determination to stay strong through tradition and by forging contemporary identities.

*Presence* explores the historic, and the here and now. Preservation of important cultural knowledge and identity is reflected through the use of art to communicate, critique and comment on issues of social and personal significance. Works by non-Indigenous artists create a confronting dialogue about occupation and oppression, at the same time highlighting a shared appreciation of the landscape and natural environment. *Presence* reveals a diversity of historical and contemporary Indigenous art that acknowledges influential communities and artists.

below

**Rover Thomas**

*Lisadell country* 1986

ochres on composition board

61 x 91.5 cm

State Art Collection,

Art Gallery of Western Australia

Purchased 1987

right

**John Longstaff**

*Breaking the news* 1887

oil on canvas

109.7 x 152.8 cm

State Art Collection,

Art Gallery of Western Australia

Purchased with funds from the

Hackett Bequest Fund, 1933



## Story

*Story* is centred on works of art that depict the human figure, and encourages exploration of the different ways artists use the human form within a narrative. The stories range from those that recount the mundane events of daily life, to the great tales of myth, legend, religion and history. These often use interacting figures to tell a story about the bonds between the individual and society, or offer models for behaviour. In other works, single figures are used to symbolise a deeper moral or spiritual meaning or give physical form to emotional states.



wonderland 

Family Activity Space

Opens Saturday 28 June 2008

Join Karin the Kangaroo to experience this exciting new space designed especially for families visiting *Wonderlust*.

Explore different textures, build a 3D puzzle, discover secrets about colour and uncover the intriguing journey of an artwork.

Copy poses and expressions from portraits, test your knowledge of art words and ideas and imagine yourself in the midst of an artwork as you experience the sights and sounds of the scene.

*wonderland* also features a reading area, seating for well-deserving parents and a variety of hands-on activities that are suitable for a diverse age range of children while supervised by their guardians.

## Circle of friends

Until 25 August 2008

The *Artist in focus* exhibition *Circle of friends* features the work of David Rosetzky and James Lynch. It explores the roles friendships play in our lives, as they are caught within webs of fear, desire, paranoia, fantasy and need. The animated projections of Lynch depict how he is perceived by his friends in their dreams. Rosetzky's DVD projection and audio installation get at the nagging doubts and fears that cast a worried hue over our relationships with our peers. In *Circle of friends* no friendship can be taken at face value.



### David Rosetzky

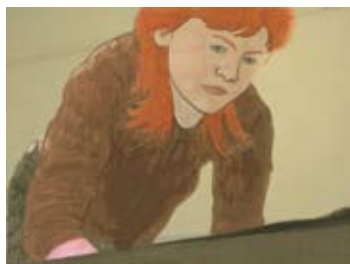
*Nothing like this* 2007 (video-stills)

16 mm film transferred to DVD (16:9 format)

24 minutes, 36 seconds

State Art Collection, Art Gallery of Western Australia

Purchased 2007



### James Lynch

*We were moving* 2005

digital still 2:40 mins

synthetic polymer paint and pencil on paper transferred to DVD

On loan from the artist, courtesy of Uplands Gallery Melbourne

& Galerie Frank Elbaz Paris

## PEEP:

## Glimpses of the last 4 decades from the Kerry Stokes Collection

Until 25 August 2008

The exhibition *PEEP* is a highly personalised view of the diversity in International and Australian art produced since the 1960s. Mounted by the distinguished curator, the late John Stringer, at the invitation of the TarraWarra Museum of Art, Melbourne, the exhibition showcases not only Stringer's curatorial preferences over four decades, but also provides a glimpse into the famed Kerry Stokes Collection. Many of the international works have not been publicly shown in Australia before but Perth viewers may be more familiar with some of the strongly featured West Australian artists including Miriam Stannage, Howard Taylor, Cecile Williams, Matthew Hunt and Christian de Vietri, Steve Tepper and Philip Gamblen. This exhibition provides a unique opportunity for a fascinating insight into how a curator and a major private collector, both based in Perth, respond to the art of our time.

*Presented in collaboration with Australian Capital Equity Pty. Limited and the TarraWarra Museum of Art*



### Bridget Riley

*Remember* 1964

emulsion on board

106.7 x 111.1 cm

Kerry Stokes Collection, Perth

© 2007 Bridget Riley

All rights reserved. Courtesy Karsten Schubert, London

Photograph by Robert Frith, Acorn Photo Agency, Perth

## Grace Crowley: being modern

Until 21 September 2008

A National Gallery of Australia Travelling Exhibition

Grace Crowley commenced her artistic career in Sydney in the late 1910s painting in a soft impressionistic manner. However, her first-hand encounter with Cubism in France in the 1920s profoundly changed her outlook and Crowley returned to Australia in 1930 committed to producing art based on abstract, rather than representational, qualities. In spite of the antagonism of the local art scene, in the 1940s she and fellow painter Ralph Balson became the first Australian artists to entirely abandon representation. *Grace Crowley: being modern* traces the remarkable artistic journey of one of this country's most influential modern artists.



### Grace Crowley

*Abstract painting* 1953

oil on hardboard

57 x 81 cm

State Art Collection, Art Gallery of Western Australia

Bequest of the artist 1979

## Frank Hinder: a study in dynamic symmetry

Until 21 September 2008

Active for the majority of the twentieth century, Frank Hinder holds an important place in the development of modern art in Australia. His works produced while a student in the United States, before his return to Australia in 1934, indicate the path Hinder's abstraction was to take. This collection of 37 beautifully drawn studies on paper, produced between 1933 and 1957, show the artist's working progression from representational images to abstract compositions, and his achievements in rhythm and harmony. The studies are drawn exclusively from the State Art Collection and include works from two recent donations.



### Frank Hinder

*In the tram* 1939

pencil and watercolour on paper

12.8 x 15.9 cm (sheet)

State Art Collection, Art Gallery of Western Australia

Gift of Frank Hinder, 1983

## Art in Bloom 2008

22 – 24 August 2008

*Art in Bloom*, organised by the Friends of the Art Gallery of Western Australia, is set to be the floral extravaganza of 2008.

Thousands of flowers and plants will fill the gallery as floral artists, architects, health professionals, sporting celebrities and leading artists create floral responses to over 100 exhibited works of art, this year reflecting the works from the Gallery's monumental Collection display, *Wonderlust*.

This biennial fundraising event, now in its ninth season, offers a fantastic opportunity to see and experience the gallery in an entirely different light. *Art in Bloom* remains the only event of its kind in Australia.

An Opening Night Party will be held on Thursday 21 August. Tickets go on sale from 1 July and can be purchased by calling the Friends Office on 9492 6750.

The exhibition then opens to the public over the weekend of 22, 23 & 24 August.

An \$8.00 entry fee (\$5.00 concession) applies to the entire Gallery for the weekend event.

Proceeds raised are used by the Friends of the Art Gallery to assist with acquiring new artworks for the State Art Collection.



## Culture Warriors: National Indigenous Art Triennial

20 September – 23 November 2008

A National Gallery of Australia Travelling Exhibition

*Culture Warriors* surveys and celebrates the rich cultural diversity of contemporary Indigenous art practice across regional, remote and urban Australia. Housed within are the voices of artists working in the here and the now. *Culture Warriors* pays tribute to the 'big guns', Jean Baptiste Apuatimi, Philip Gudthaykudthay, John Mawurndjui, Lofty Bardayal Nadjamerrek and Arthur Koo'ekka Pambegan Jnr, whose careers span the 40 years preceding the momentous 1967 (Aboriginal) referendum. *Culture Warriors* simultaneously showcases the work of 26 emerging and established artists whose strong and often poignant cultural narratives create a vivid visual dialogue of contemporary life for Indigenous Australians.



### Maringka Baker

Pitjantjatjara people

*Kuru Ala* 2007

synthetic polymer paint on canvas

200.0 x 153.5 cm

Purchased 2007

National Gallery of Australia

© Maringka Baker



## The Gift of Today's Art to Tomorrow's Generations

The Art Gallery of Western Australia has recently established a major new Acquisition Fund to transform your State Art Collection. Its goal is to build the Collection to a new level of excellence: to acquire the very best art of our time in the areas of Indigenous, Western Australian, Australian and international contemporary art, creating a priceless gift to future generations.

The Art Gallery of Western Australia Acquisition Fund was announced in December 2007 when Premier Alan Carpenter launched the Ignite package, a bold new arts and culture funding initiative that will revolutionise the cultural landscape. At this time, the Premier pledged \$10 million toward the Acquisition Fund and laid down a challenge to the corporate and private sector to match the Government's contribution dollar-for-dollar. Premier Carpenter has offered an incentive: when the first \$10 million is matched through a Capital Campaign, the Government will provide another \$5 million.

We are very pleased to announce the challenge has been taken up by four leaders in the business world, who have provided a \$4 million start to the Campaign. Capital Campaign President Michael Chaney believes that, "The Acquisition Fund will be critical to ensuring the Gallery is able to maintain the State Art Collection at a high level. I commend the four companies who are leading by example in this campaign – BHP Billiton, National Australia Bank, Wesfarmers and Woodside. Their generosity is a testament to their vision for Western Australia and for Western Australians."

Inspired by the far-sighted responses from these organisations, the Capital Campaign is now widening its search for contributors at all levels. As Chairman of the Capital Campaign, Adrian Fini, says, "Its achievement will be to provide a living Gallery full of outstanding works of art that will become the backbone for community pride and passion, and inspire us to think about who we are and who we might become".

This is a unique opportunity to join an ambitious, forward-thinking team of supporters to give the gift of today's art to tomorrow's generations.

If you would like to know more about this exciting project please contact Foundation Director Lyn-Marie Hegarty on 9492 6760 .

## Announcing the Western Australian Premier's Indigenous Art Awards 2008

The Art Gallery of Western Australia will venture into new territory this year when it presents the inaugural Western Australian Premier's Indigenous Art Awards. The national Awards, the richest in Australia, will celebrate the diversity and richness of Indigenous art and honour Aboriginal and Torres Strait Islander artists from across the country.

The Awards form part of the Ignite package, the biggest single State Government arts funding injection, designed to transform the cultural landscape.

The Western Australian Premier's Indigenous Art Awards will feature an exhibition of outstanding Indigenous art and offer three awards totalling \$65,000. "Australia is home to the oldest continual Indigenous culture in the world, and our Indigenous artists help to define our national identity and raise Australia's overseas profile," Mr Carpenter said.

Non-acquisitive awards are:

- Western Australian Premier's Indigenous Art Award of \$50,000
- Ignite: The Western Australian Indigenous Artist Award of \$10,000
- People's Choice Award of \$5,000

The Awards are open to Aboriginal and Torres Strait Islander artists, 18 years or older, currently living in Australia. Artists must be nominated to qualify for the Awards. Nominations close on 21 July 2008.

The Art Gallery of Western Australia wholeheartedly embraces this opportunity to acknowledge Indigenous artists and raise the profile of contemporary Indigenous artists. The Western Australian Premier's Indigenous Art Awards will be on display at the Art Gallery from 1 November 2008.

For further information visit the Art Gallery of Western Australia website: [www.artgallery.wa.gov.au](http://www.artgallery.wa.gov.au)

## School Holiday Fun and NAIDOC Week Celebrations

Saturday 5 July – Sunday 20 July

### NAIDOC Art Trail NAIDOC Week: 6–13 July

10am – 4pm daily

Gold coin donation.

Discover new works and surprises from the  
*Wonderlust* Exhibition

Enter the prize draw to win a fabulous pack of art supplies.

### Children's Art Activity Day Week 1

Friday 11 July only, 10am – 2pm

Gold coin donation.

Join artist Norma MacDonald

Display your creative skills using Gallery artworks as inspiration.

### Children's Art Activity Week 2

10am – 12 noon, weekdays only

Gold coin donation.

Hands on! Join in this art-making activity and take home  
your finished piece to take pride of place on the fridge!

## School Holiday Fun in September – October

Saturday 27 September – Sunday 12 October

### Children's Art Activity

10am – 12 noon, weekdays only.

Gold coin donation.

Join in the fun and show off your artistic talents.

### Children's Art Trail

10am – 4pm daily

Gold coin donation.

Explore new art works, solve puzzles and learn interesting facts.  
Enter the prize draw to win a fabulous pack of art supplies.

### City Playground Pass

Pick up your free City Playground Pass from the Art Gallery  
Reception for a range of fantastic activity ideas and discount  
offers which can be used throughout the City of Perth  
during the School holidays.

The Art Trail and art-making activities are suitable for primary  
school aged children. No booking is required. Parents/carers  
must supervise their children at all times. Activities can be  
subject to change: please check our website for current details  
[www.artgallery.wa.gov.au](http://www.artgallery.wa.gov.au)

## Watercolours: Family Day

Sunday 6 July 10am – 2pm

FREE

A day filled with free water-themed fun and entertainment for  
the whole family! Children can get hands-on in the art-making  
activities, meet the Gallery's own 'spider-man', learn the  
amazing art of ice-sculpting and enjoy live music and dance  
performances.

The Watercolours Family Day launches the Art Gallery's new  
Water Walk, a trail sponsored by the Water Corporation  
which uses selected artworks from *Wonderlust* to explore the  
complex and often surprising relationships between people  
and water in all its forms and uses. Discover the importance  
of water and how we can all play a role in protecting and  
conserving this precious resource.

Enjoy Water Walk free guided tours, talks by Gallery  
conservators, and an information session on waterwise  
gardening presented by Chris Ferreira.

Be in the draw on the day to win a water tank for your home  
donated by West Coast Poly or two nights accommodation  
at Quay West Bunker Bay Resort, donated by Mirvac Hotels  
and Resorts.

Activities can be subject to change: please check our website  
for full details [www.artgallery.wa.gov.au](http://www.artgallery.wa.gov.au)

*Watercolours Family Day is proudly sponsored by the  
Water Corporation.*



### Charles Blackman

*Triptych Alice* 1957

oil and enamel on masonite

State Art Collection, Art Gallery of Western Australia

Purchased with assistance from the Friends of the Art Gallery, 1988

## Music at the Gallery

### Through New Eyes WASO Chamber Players



Friday 15 August 7.30pm  
Art Gallery of Western Australia

JAMES LEDGER *Bell Weather* WORLD PREMIERE  
SCHOENBERG *Chamber Symphony No.1*  
MOZART *Clarinet Quintet K581*

John Harding, violin /director  
Alan R. Dodge, presenter

Coinciding with *Wonderlust New journeys Your Collection*, this WASO concert will include the world premiere of a new work by Composer-In-Residence James Ledger, *Bell Weather* is a work inspired by acclaimed Australian artist Rosalie Gascoigne's *Monaro*, a work in the State Art Collection. This program culminates in the stunning Clarinet Quintet of Mozart.

Rosalie Gascoigne's *Monaro* is on display in the *Wonderlust* exhibition at the Art Gallery and available for viewing on the evening from 6.00pm.

James Ledger's work is commissioned by WASO with the support of ALNG.

Tickets from \$20.00 – \$48.00.  
Bookings through WASO on 9326 0000 or  
[www.waso.com.au](http://www.waso.com.au)

### Tura New Music presents crossing roper bar



Saturday 6 September 2008  
Art Gallery of Western Australia

Featuring:  
**Paul Grabowsky and the Australia Art Orchestra;**  
**Wagilak Gujarra/Nyilapidgi Musicians**  
**from Ngukurr, Arnhem Land;**  
**and Special Guest Ruby Hunter**

*An invitation to connect with our country's spiritual ancestry  
in a way we are rarely afforded – THE AGE*

Further information 9228 3711 or [www.tura.com.au](http://www.tura.com.au)

## Calendar

### JUNE

**Grace Crowley: being modern**  
14 June – 21 September  
National Gallery of Australia Travelling Exhibition

**Frank Hinder: a study in dynamic symmetry**  
14 June – 21 September

**City of Perth Winter Arts Festival**  
June – August

**Wonderlust New journeys Your collection**  
Opens 28 June

### JULY

**School Holiday Activities**  
5 – 20 July

**NAIDOC Week**  
6 – 13 July

### AUGUST

**WASO at the Gallery**  
15 August

**Art in Bloom**  
22 – 24 August

### SEPTEMBER

**Tura New Music presents Scale Variable at the Gallery**  
Saturday 6 September

**Culture Warriors: National Indigenous Art Triennial**  
20 September – 23 November  
National Gallery of Australia Travelling Exhibition

**School Holiday Activities**  
27 September – 12 October

### DECEMBER

**Gordon Bennett**  
Opens 20 December  
National Gallery of Australia Travelling Exhibition

**School Holiday Activities**  
20 December – 1 February 2009



**Wesfarmers Arts**

## Principal Partner of the Art Gallery of Western Australia

The Gallery is thrilled to announce a new three-year partnership which will see Wesfarmers take up the role of Principal Partner of the Gallery from July 2008 to 2011 through the company's award-winning Wesfarmers Arts sponsorship programme. The partnership brings a new dimension to a relationship that spans two decades and several exhibitions, publications and educational programmes for the Western Australian community.

Wesfarmers Managing Director, Richard Goyder said "It's a real pleasure for us to be taking this next step with the Gallery. We've been a financial supporter since the 1980s and collaborated together on some great initiatives. Our own collection show *Sublime* was a special highlight for us, and more recently we've had an involvement in the Gallery's collecting programme through the Duyfken Aboriginal Print Portfolio. Over the years we've found the relationship increasingly rewarding and it's reinforced to us the impact the Gallery makes on the cultural life of the community here in Western Australia. The Gallery is now entering the next stage of its development with significantly increased state government investment in its acquisition programme and our feeling is that the timing is right to consolidate our support in this way."

The Art Gallery of Western Australia's Acting Director Gary Dufour said, "We are delighted with this new phase in our partnership with Wesfarmers which has once again demonstrated its commitment to the cultural development of our community and the importance of creating cultural capital for Western Australians. The company has a deep understanding of the Gallery's vision and together we will continue to connect people with art."

Marking the commencement of the partnership, the Gallery's free guided tours will now be known as the Wesfarmers Arts Walk-in Tours. These tours are an integral part of the Gallery program, generously guided through the expertise of the Volunteer Gallery Guides. The tours run Tuesday to Sunday throughout the year and cover a rich range of themes and topics about current exhibitions and the State Art Collection displays.

The partnership ensures enhanced community, corporate and cultural sector benefits.



**Wesfarmers Arts Walk-in Tours**

Generously guided by Volunteer Gallery Guides,  
no pre-booking required

### JULY

**Monday 7 – Friday 11** at noon

(NAIDOC WEEK)

**Selected works from the Indigenous Collection**

**Tuesday 1, 8, 15, 22, 29** at 11 am and 1 pm

**From Colonial to Contemporary**

**Wednesday 2, 9, 16, 23, 30** at 11 am and 1 pm

**Grace Crowley: being modern**

**Thursday 3, 10, 17, 24, 31** at 11 am and 1 pm

**Women artists in Wonderlust**

**Friday 4, 11, 18, 25** at 12.30 pm

**White boat 8 by Akio Hamatani**

**Friday 4, 11, 18, 25** at 2 pm

**Wonderlust New journeys Your collection**

**Saturday 5, 12, 19, 26** at 1 pm

**General tour of your Collection**

**Sunday 6, 13, 20, 27** at 11 am and 1 pm

**Wonderlust: Material Gesture**

### AUGUST

**Tuesday 5, 12, 19, 26** at 11 am and 1 pm

**Grace Crowley: being modern**

**Wednesday 6, 13, 20, 27** at 11 am and 1 pm

**How the Artist uses paint**

**Thursday 7, 14, 21, 28** at 11 am and 1 pm

**Land through Indigenous eyes**

**Friday 1, 8, 15, 22, 29** at 12.30 pm

**Triangular mobile by Alexander Calder**

**Friday 1, 8, 15, 22, 29** at 2 pm

**Contemporary icons**

**Saturday 2, 9, 16, 23, 30** at 1 pm

**A tour of your Collection**

**Sunday 3, 10, 17, 24, 31** at 11 am and 1 pm

**Wonderlust New journeys Your collection**

### SEPTEMBER

**Tuesday 2, 9, 16, 23, 30** at 11 am and 1 pm

**Picture perfect**

**Wednesday 3, 10, 17, 24** at 11 am and 1 pm

**Wonderlust: Presence**

**Thursday 4, 11, 18, 25** at 11 am and 1 pm

**Wonderlust: Mapping**

**Friday 5, 12, 19, 26** at 12.30 pm

**Painting for a new republic by Gordon Bennet**

**Friday 5, 12, 19, 26** at 2 pm

**Craft from the Collection**

**Saturday 6, 13, 20, 27** at 1 pm

**A tour of your Collection**

**Sunday 7, 14, 21, 28** at 11 am, 11.30 am, 1 pm and 1.30 pm

**Special works in Wonderlust**

\* Advertised tours may be subject to change.

We apologise for any inconvenience

## Art Gallery of Western Australia

Perth Cultural Centre, Perth WA  
Postal address; PO Box 8363, Perth Business Centre, Perth WA 6849  
Telephone: +61 8 9492 6600  
Facsimile: +61 8 9492 6655  
E-mail: admin@artgallery.wa.gov.au  
Internet: www.artgallery.wa.gov.au Infoline: +61 8 9492 6622

### Opening hours

10am – 5pm daily  
*Art in Bloom* 22 – 24 August  
9am – 5pm Friday and Sunday, 8.30 – 5pm Saturday

**Admission** to the Gallery is free.  
An entry charge applies to *Art in Bloom*.

### Public programs/bookings

Telephone: +61 8 9492 6644  
Facsimile: +61 8 9492 6648  
E-mail: educate@artgallery.wa.gov.au

### Art Gallery Foundation

The Foundation provides an opportunity for private individuals and corporations to play a significant role in the development of the Art Gallery of Western Australia.  
Telephone: +61 8 9492 6761  
E-mail: foundation@artgallery.wa.gov.au

### Friends of the Art Gallery

Membership enables closer involvement with the Gallery.  
Telephone: +61 8 9492 6750  
E-mail: friends@artgallery.wa.gov.au

### The Gallery Shop

A fabulous range of items including gifts and jewellery and an extensive selection of products for children.  
Telephone: +61 8 9492 6712  
E-mail: shop@artgallery.wa.gov.au

### Caffissimo at the Gallery

Take a break from your visit to the Gallery and enjoy a morning coffee, lunch or afternoon tea. Licensed Café.  
Special offers available for Friends and Foundation members.  
Ask in the Friends/Foundation offices for details.  
Telephone: +61 8 9228 3100

## REGIONAL GALLERIES

### Geraldton Regional Art Gallery

24 Chapman Road, Geraldton WA 6530  
Telephone: +61 8 9964 7170/7180  
E-mail: artgallery@geraldton.wa.gov.au

### Bunbury Regional Art Galleries

64 Wittenoorn Street, Bunbury WA 6230  
Telephone: +61 8 9721 8616  
E-mail: mail@brag.org.au

## Art Gallery of Western Australia Special Acquisition Fund Lead Donors



## Sponsors

### Annual Gallery sponsors



### Grace Crowley: being modern

A National Gallery of Australia Travelling Exhibition  
Proudly Supported by *Australian air Express*



The National Gallery of Australia is an Australian Government Agency

### Culture Warriors: National Indigenous Art Triennial

A National Gallery of Australia Travelling Exhibition



The National Gallery of Australia is an Australian Government Agency

### Art in Bloom



### Water Walk





This is the Gallery's quarterly publication which contains all the latest information on exhibitions, events and public tours. If you would like to receive it by email, together with our electronic newsletter, please log on to <http://www.artgallery.wa.gov.au/publications/previewmag.htm> If you are already a subscriber please be sure to update any change of contact details.